

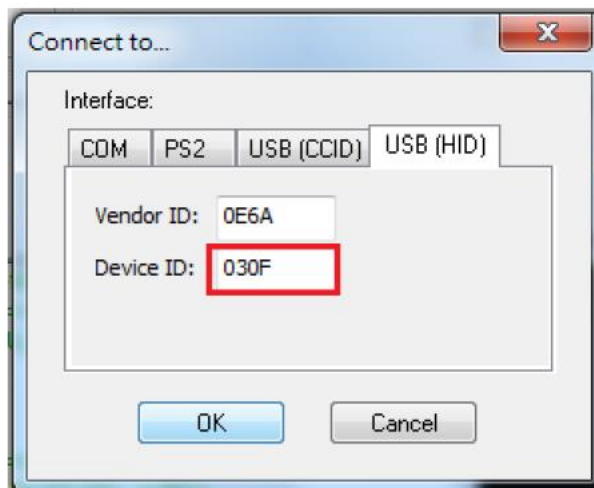
CIDTestAp V07.01 Operation Manual

1. Device Connection
2. Utility Features
3. Configuration Setup

1. Device Connection

1. USB(HID) Interface

Select the USB HID device which has been plug into the PC USB port, enter the correct Vendor ID = 0E6A and Device ID then press 'OK", different device has its own Device ID., e.g. DID=0x030F for keyboard and HID USB, DID=0x5082 for keyboard, HID and VCP USB.

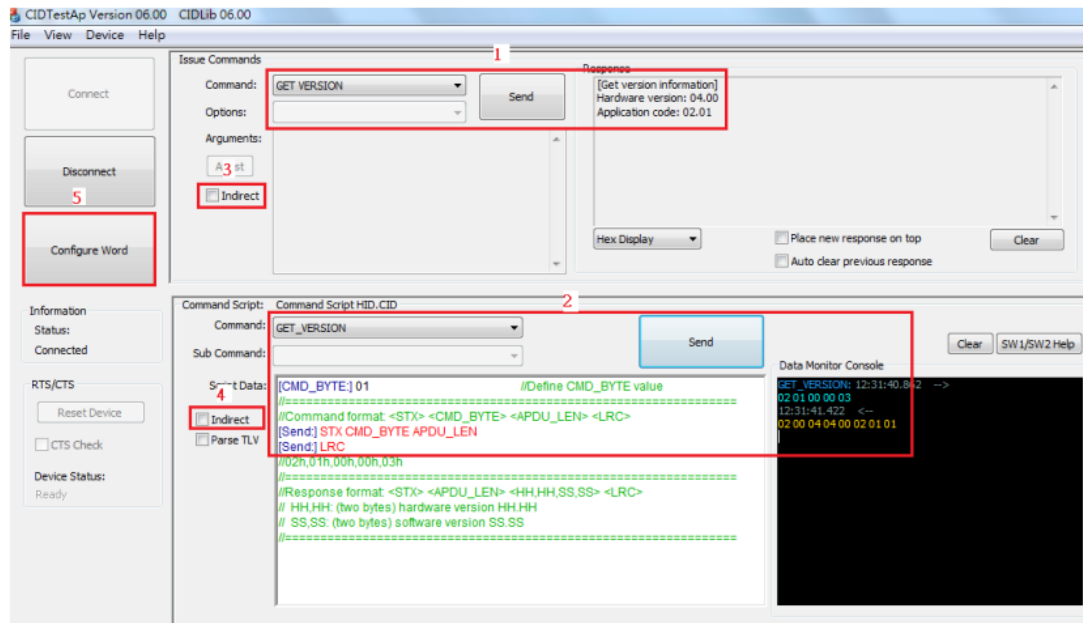


2. Utility Features

After success device connection each supported command will get its response, e.g. Get Version command should response with the device HW/FW version, for all command set supported please reference its programming guide.

There are two command/response windows can be used (see block1 & 2).

For second level device the Indirect command signal should be selected (see block3 & 4). Press the button "Configure Word" to enter the parameter setting function (see Block 5). The two response windows show up the data from the device connected.



2. Configuration Setup

Device functions(e.g. MSR, iButton, RFID, Chip card) behavior can be defined and stored by this tool.

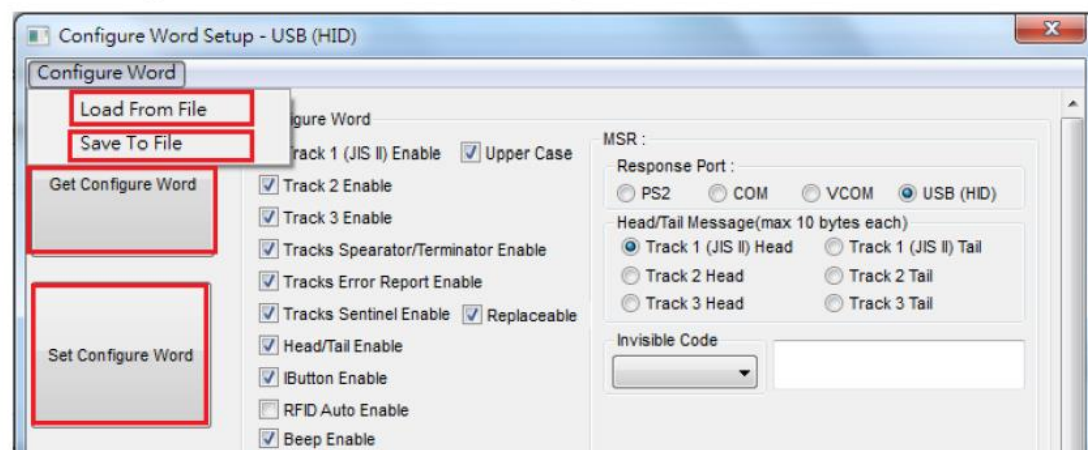
Four operation buttons define as below:

“Load From File”: Load the previous setting configuration file from storage.

“Save To File”: Save the current screen setting to file in storage.

“Get Configuration Word”: Get current setting in the device connected.

“Set Configuration Word”: Set current setting on the screen to the device connected.



16 parameter areas(see below) are used for four functions, each function related area should be setup correctly and press Set Configure Word button before operation.

MSR function areas: 1,2,5,6,9,11,12,13

iButton function areas: 2,3,5,7,10,11,14

RFID function areas: 2,4,5,8,11,15

Chip card function areas: 16

The screenshot shows the 'Configure Word Setup - USB (HID)' window. It contains several sections and controls, with 16 numbered red boxes highlighting specific areas:

- 1**: 'Track 1 (JIS II) Enable' checkbox.
- 2**: 'Head/Tail Enable' checkbox.
- 3**: 'iButton Enable' checkbox.
- 4**: 'RFID Auto Enable' checkbox.
- 5**: 'Beep Enable' checkbox.
- 6**: 'Track1 (JIS II) Request' checkbox.
- 7**: 'Off iButton ID Request' checkbox.
- 8**: 'Off RFID ID Request' checkbox.
- 9**: 'Tracks Sequence Request' dropdown menu.
- 10**: 'iButton ID Range Request' section, including 'From' and 'To' dropdowns.
- 11**: 'Language Option' dropdown menu.
- 12**: 'Track 1 (JIS II) Start Sentinel' through 'Tracks Terminator' fields and dropdowns.
- 13**: 'MSR' section, including 'Response Port' (USB (HID) selected), 'Head/Tail Message' options, and 'Invisible Code' dropdown.
- 14**: 'iButton' section, including 'Response Port' (USB (HID) selected), 'Head/Tail Message' options, and 'Invisible Code' dropdown.
- 15**: 'RFID' section, including 'Response Port' (USB (HID) selected), 'Head/Tail Message' options, and 'Invisible Code' dropdown.
- 16**: 'ICC Response Port' section, including 'Response Port' (USB (HID) selected).

Other visible controls include 'Get Configure Word' and 'Set Configure Word' buttons, 'Information' section with 'AP Ver.' and 'Lib Ver.', 'RS232 Conf' section with 'Baud Rate' (9600), 'Parity' (Even), and a 'Close' button.

Configure word detail

Area 1

| | |
|--------------------------------------|--|
| Track 1 (JIS II) Enable: | If enabled, the track 1 data will response. |
| Track 2 Enable: | If enabled, the track 2 data will response. |
| Track 3 Enable: | If enabled, the track 3 data will response. |
| Upper Case: | If selected, the track1 data read will transfer to upper case before response. |
| Track Separator /Terminator Enable: | If enabled, the reader will send Track Separator and Track Terminator code defined in this configure word between tracks data or after the last track data. |
| Track Error Report Enable: | If enabled, the character “F” will response when track data read fail. |
| Track Sentinel Enable & Replaceable: | If enabled, the reader will send start and end sentinel at begin and last position of each track data. If replaceable, these sentinels will be replaced by the sentinel defined in this configure word. |

Area 2

| | |
|-------------------|---|
| Head/Tail Enable: | If enabled, all of the Head/Tail message defined in this configure word will prefix and suffix to each data returned. |
|-------------------|---|

Area 3

| | |
|-----------------|---|
| iButton Enable: | If enabled, iButton key ID may response when key attached or removed. |
|-----------------|---|

Area 4

| | |
|--------------------|--|
| RFID Auto. Enable: | If enabled, RFID card ID will auto. response, when RFID card is attached or removed. |
|--------------------|--|

Area 5

| | |
|--------------|--|
| Beep Enable: | If enabled, the beeper will activate to indicate the operation result. |
|--------------|--|

Area 6

| | |
|---------------------------|---|
| Track 1 (JIS II) Request: | If selected, the reader will response track data only if track1 read correctly. |
| Track 2 Request: | If selected, the reader will response track data only if track2 read correctly. |
| Track 3 Request: | If selected, the reader will response track data only if track3 read correctly. |

Area 7

| | |
|-------------------------|--|
| Off iButton ID Request: | If selected, key ID will response while key removed. |
|-------------------------|--|

Area 8

| | |
|----------------------|---|
| Off RFID ID Request: | If selected, RFID ID will response while RFID card removed. |
|----------------------|---|

Area 9

| | |
|--------------------------|---|
| Tracks Sequence Request: | Select the order of three tracks data returned. |
|--------------------------|---|

Area 10

| | |
|---------------------------|---|
| iButton ID Range Request: | Define the ibutton data range returned. |
|---------------------------|---|

Area 11

| | |
|------------------|--|
| Language Option: | Select one of supported keyboard language for PS2 or keyboard USB interface. |
|------------------|--|

Area 12

| | |
|----------------------------------|---|
| Track 1 (JIS II) Start Sentinel: | Define Track 1 Start sentinel byte, default is “%”. |
| Track 2 Start Sentinel: | Define Track 2 Start sentinel byte, default is “;”. |
| Track 3 Start Sentinel: | Define Track 3 Start sentinel byte, default is “+”. |
| Tracks End Sentinel: | Define all Tracks End sentinel byte, default is “?”. |
| Tracks Separator: | Define the insertion byte between each track data returned. |
| Tracks Terminator: | Define the appending byte after the last track data returned. |

Area 13

| | |
|---|--|
| MSR Response Port: | Select MSR data response port right after swiped. |
| Head/Tail Message: | Message prefix and suffix to each track data returned. |
| Each Head/Tail accepts10 bytes max. long. Invisible code: | Enter keyboard control code. |

Area 14

| | |
|------------------------|---|
| IButton Response Port: | Select Ibutton key ID response port right after key attached or removed. |
| Head/Tail Message: | Message prefix and suffix to key data returned. Each Head/Tail accepts10 bytes max. long. |
| Invisible code: | Enter keyboard control code. |

Area 15

| | |
|---------------------|---|
| RFID Response Port: | Select RFID ID response port right after tag attached or removed. |
| Head/Tail Message: | Message prefix and suffix to tag data returned. Each Head/Tail accepts10 bytes max. long. |
| Invisible code: | Enter keyboard control code. |

Area 16

| | |
|--------------------|---|
| ICC Response Port: | Select chip card auto. ATR response port, |
|--------------------|---|